

Solid-state HDTV Recorder

JP2pro_rev.S



Features

4:2:2 10-bit full spec. HDTV recording (Stand-alone base)

JPEG2000 lossless and lossy compression

Removable SSD magazine (up to 1.5 TB capacity)

Long recording time (@1.5 TB SSD magazine)

- Lossless (=uncompressed): Approx. 5.6H (60i) and 7H (24psf)
- Hi-quality (HDCAM-SR class): Approx. 17.6H (60i) and 22H (24psf)
- Long-play (HDCAM class): Approx. 40H (60i) and 50H (24psf)

2RU compact size, light weight (9 kg) and low power consumption (85 W)

Higher shock resistance, altitude (3,000 m) and temperature range (0-45 °C)

Fully synchronized multi-machine operation

Simultaneous record/play

Interval recording (Time Laps)

Loop recording and loop playback

Removable SSD Magazine



SSD Magazine

SIZE: 76.8 mm(W)x40 mm(H)x105.4 mm(D)

WEIGHT: 350 ~ 400 g

Functions

JOG / VAR / SHUTTLE, Ultra high speed search

Random and sequential CLIP playback

Loop record, loop play

Character insertion on the monitor out

Remote control: RS-422, RS-232, GPI or Ethernet

Various HDTV standards (4:2:2 10bit)

1080/ 59.94i, 60i 23.98psf, 24psf, 30psf

720/ 59.94p, 60p 1080/ 50i, 1080/ 25psf

2K (2048x1080/24psf, option)

Gen-lock to external Tri-level sync or BB

Time code: LTC VITC

◆ **VANC meta data**

Internal test signals (CB, RAMP, BLK, 1kHz)

Options

VTR like front control panel
Ethernet / GUI “JP2pro-Controller”
Remote Controller “SYNCHRO-CONT 2000”
SSD Magazine (192, 384, 768 and 1,536 GB capacity)
Reversible lossless compression
Simultaneous record/play
2K (2048x1080) mode



Front control panel

Control means

Synchro-cont 2000



Synchronous operation
up to four recorders

Front control panel option



PC: Ethernet/GUI



Usable for Multi-machine control



Basic configuration

- RS-422
- Remote controllers
- Slow-motion controllers
- APC on-air controller

- GPI control

- RS-232C
- Custom made controller



CLIP control using thumbnail pictures

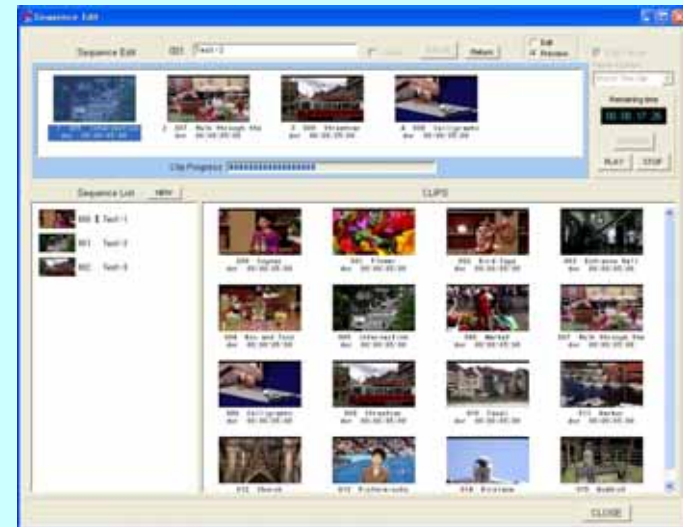


CLIP setting dialog

The thumbnail pictures are decoded from low resolution part of the recorded JPEG2000 scalable code stream. Therefore, no additional box is needed.

Direct connection between the JP2pro recorder and your PC through an Ethernet cable simply achieves this thumbnail picture transfer.

SEQ edit/preview dialog



Typical Applications

High quality field production of drama and natural programs

Sports programs with slow-motion and highlight editing

Time-shift broadcasting

HDTV shooting from airplanes, ships and OB vans

Weather and satellite camera recording system (skip-back)

Events, exhibitions and conventions using large screen

Uncompressed picture source for Engineering and Science research

Surveillance for Military, Defense and other purposes

Special Applications

Digital cinema recorder (2K/24P, 720P)

3D HDTV and 4:4:4:4 recording (x2 synchronous rec/play)

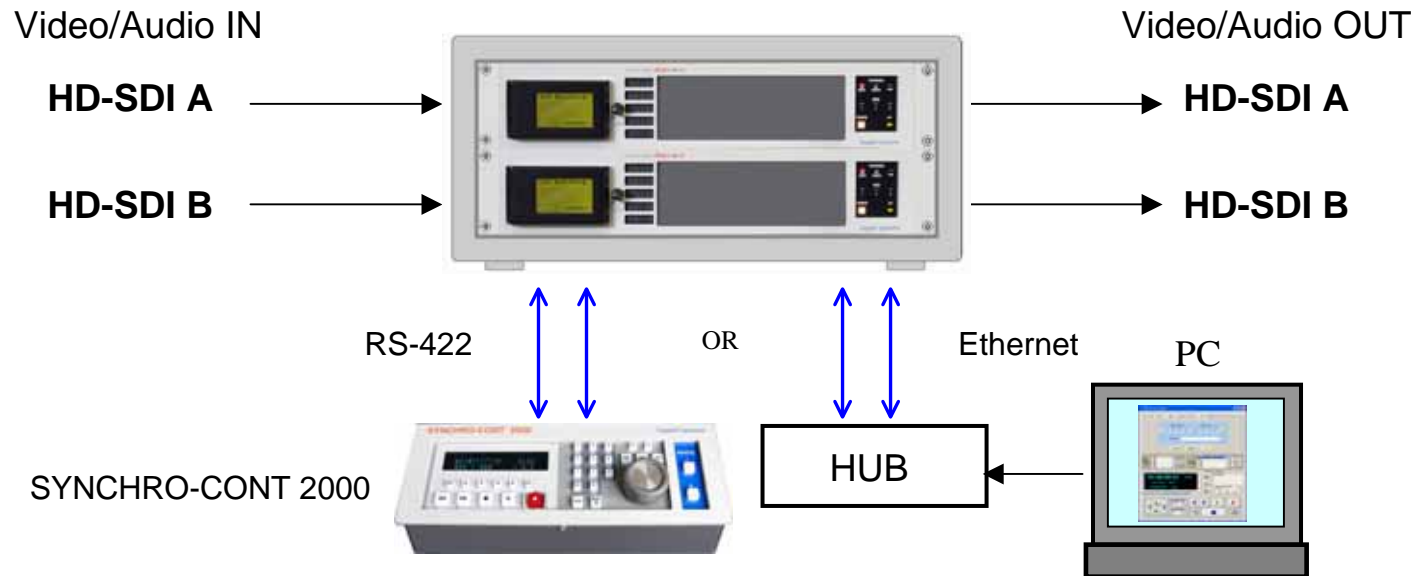
Ultra high definition (x4, x8, x16 synchronous rec/play)



3D, 4:4:4:4, 50P/60P recording system

Full synchronized control is possible from the **SYNCHRO-CONT 2000** or the **Ethernet GUI**.

Long recording time---**LOSSLESS** (Approx. 6 hours) , **HQ** Visually Lossless (Approx. 20 hours)



4 K recording system

Full synchronized control is possible from the **SYNCHRO-CONT 2000** or the **Ethernet GUI**.

Long recording time--- **LOSSLESS** (Approx. 6 hours) , **HQ** Visually Lossless (Approx. 20 hours)

